

.257 Acres
CALL FOR PRICE

CREVE COEUR, IL

CREVE COEUR, IL 61610

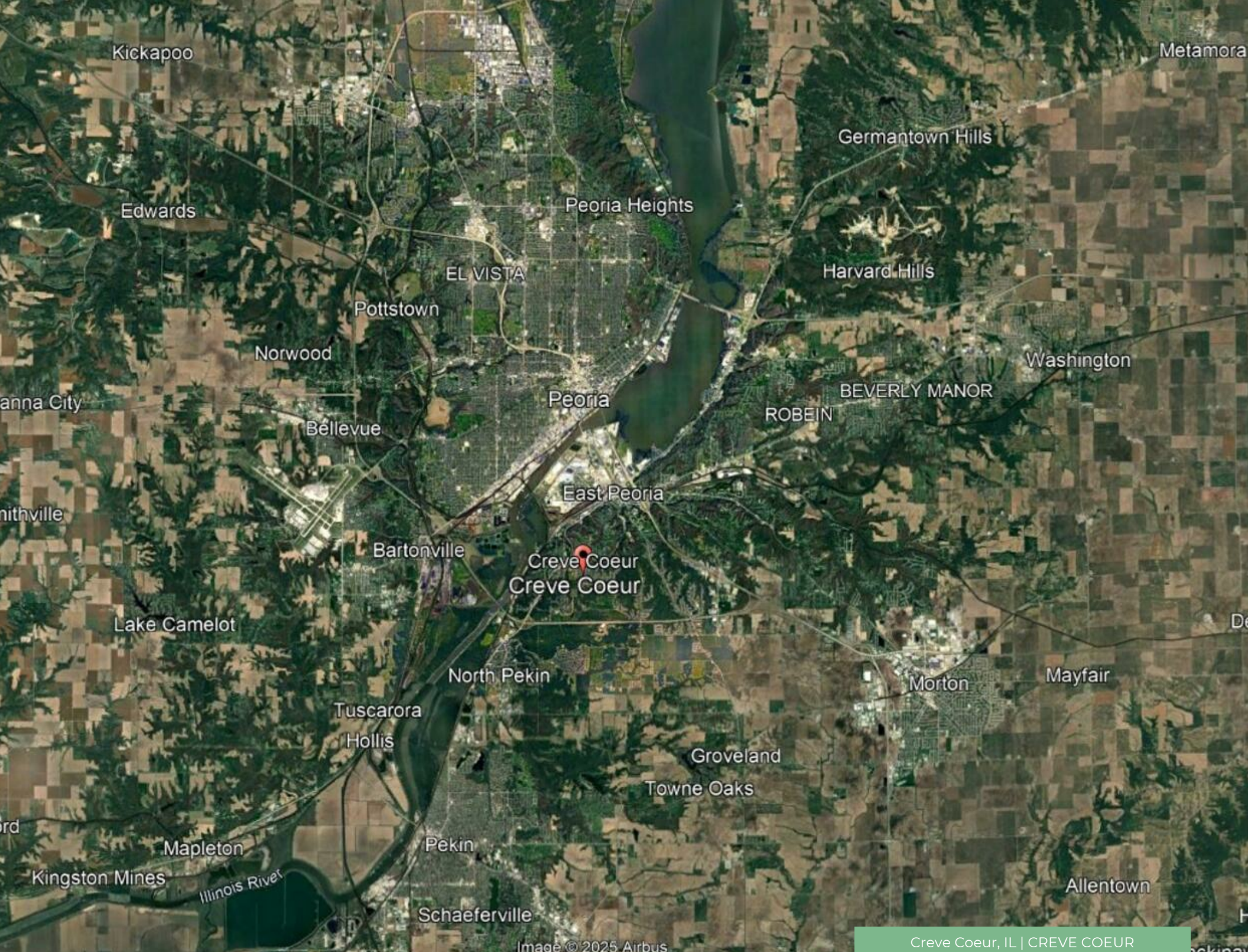


Westmore Group, Inc.
15455 Conway Road, Suite 205
Chesterfield, MO 63017
Office: 636-534-5900
westmoregroup.com

David Elkan
Broker
Mobile: 636-534-5900
info@westmoregroup.com
License #: 2006016265

Daniel Elkan
Broker
Direct: 636-534-5900
daniel@westmoregroup.com
License #: 471012536









[illegible][illegible][illegible]

Downloaded At: 11:53 11 September 2009

100-100-100
 100-100-100
 100-100-100

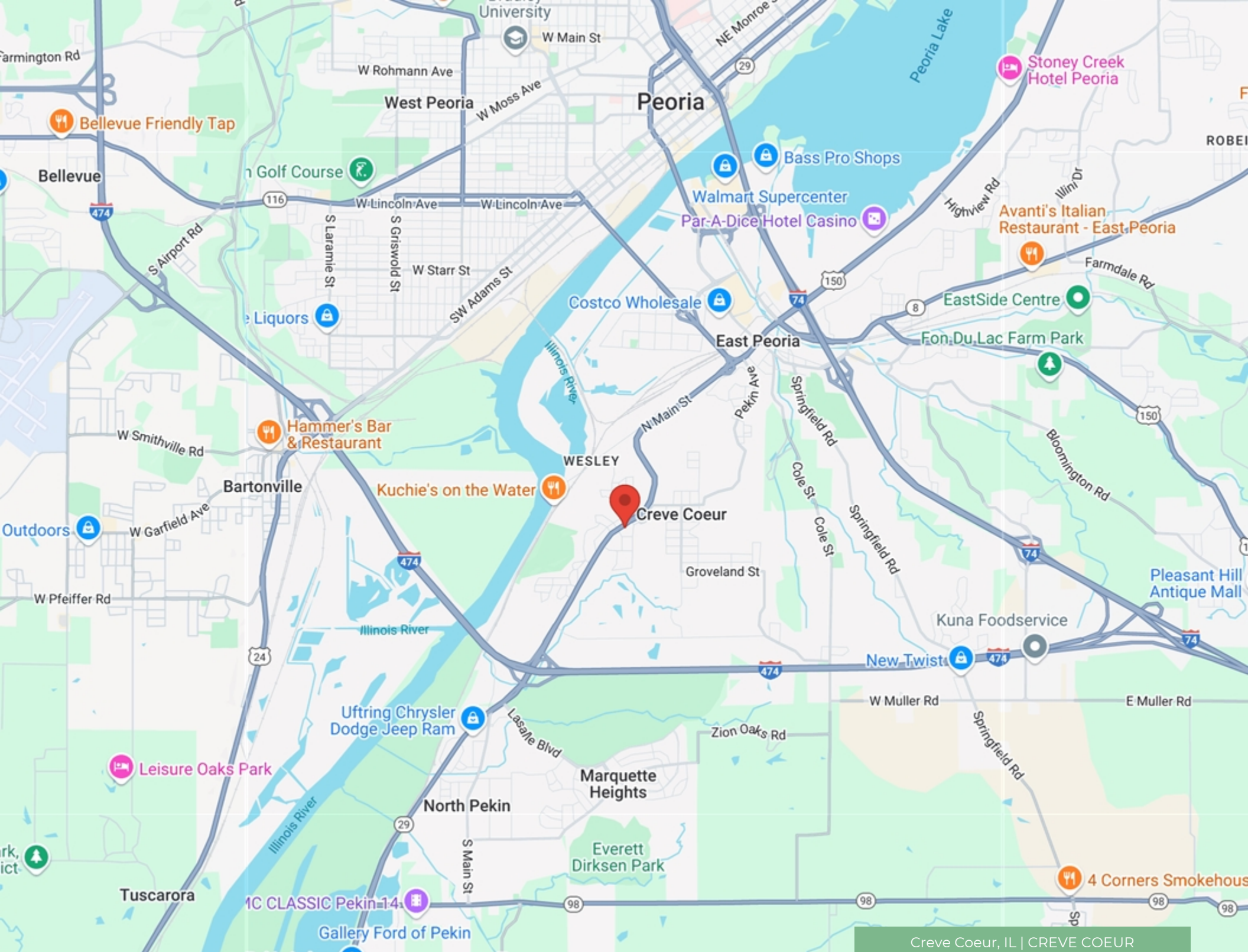
DEMOGRAPHICS

POPULATION	1 MILE	3 MILE	5 MILE
2000 Population	4,540	32,896	97,839
2010 Population	4,574	31,133	93,443
2024 Population	3,977	26,891	82,741
2029 Population	3,826	26,731	80,927
2024-2029 Growth Rate	-0.77 %	-0.12 %	-0.44 %
2024 Daytime Population	3,301	32,369	107,674

2024 HOUSEHOLD INCOME	1 MILE	3 MILE	5 MILE
less than \$15000	112	1,640	5,054
\$15000-24999	137	1,085	3,158
\$25000-34999	296	1,072	2,851
\$35000-49999	310	1,613	5,212
\$50000-74999	351	2,209	6,473
\$75000-99999	145	1,345	4,234
\$100000-149999	299	1,585	4,573
\$150000-199999	38	673	2,097
\$200000 or greater	65	282	1,174
Median HH Income	\$ 51,001	\$ 52,670	\$ 53,082
Average HH Income	\$ 72,545	\$ 69,908	\$ 72,765

HOUSEHOLDS	1 MILE	3 MILE	5 MILE
2000 Total Households	1,849	12,563	37,518
2010 Total Households	1,882	12,080	36,626
2024 Total Households	1,754	11,504	34,825
2029 Total Households	1,736	11,770	35,082
2024 Average Household Size	2.27	2.33	2.3
2024 Owner Occupied Housing	1,308	7,542	21,420
2029 Owner Occupied Housing	1,308	7,654	21,855
2024 Renter Occupied Housing	446	3,962	13,405
2029 Renter Occupied Housing	428	4,116	13,228
2024 Vacant Housing	273	1,842	5,789
2024 Total Housing	2,027	13,346	40,614





ABOUT CREVE COEUR

Creve Coeur is a village in Groveland Township, Tazewell County, Illinois, United States. As of the 2020 census, the village population was 4,934. Creve Coeur is a suburb of Peoria and is part of the Peoria, Illinois Metropolitan Statistical Area.



CITY OF CREVE COEUR

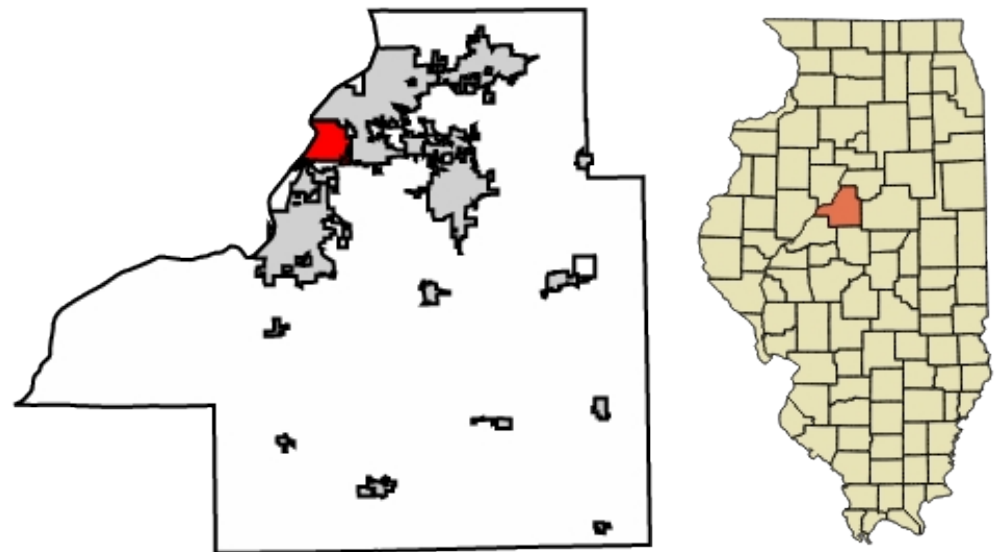
COUNTY

TAZEWELL

AREA

POPULATION

CITY	4.5 SQ MI	POPULATION	4,934
LAND	4.2 SQ MI	DENSITY	1,166.15 SQ MI
WATER	0.3 SQ MI		
ELEVATION	656 FT		



CONFIDENTIALITY STATEMENT

The information contained in the following offering memorandum is proprietary and strictly confidential. It is intended to be reviewed only by the party receiving it from WESTMORE GROUP, INC. and it should not be made available to any other person or entity without the written consent of WESTMORE GROUP, INC..

By taking possession of and reviewing the information contained herein the recipient agrees to hold and treat all such information in the strictest confidence. The recipient further agrees that recipient will not photocopy or duplicate any part of the offering memorandum. If you have no interest in the subject property, please promptly return this offering memorandum to WESTMORE GROUP, INC.. This offering memorandum has been prepared to provide summary, unverified financial and physical information to prospective purchasers, and to establish only a preliminary level of interest in the subject property. The information contained herein is not a substitute for a thorough due diligence investigation. WESTMORE GROUP, INC. has not made any investigation, and makes no warranty or representation with respect to the income or expenses for the subject property, the future projected financial performance of the property, the size and square footage of the property and improvements, the presence of absence of contaminating substances, PCBs or asbestos, the compliance with local, state and federal regulations, the physical condition of the improvements thereon, or financial condition or business prospects of any tenant, or any tenant's plans or intentions to continue its occupancy of the subject property. The information contained in this offering memorandum has been obtained from sources we believe reliable; however, WESTMORE GROUP, INC. has not verified, and will not verify, any of the information contained herein, nor has WESTMORE GROUP, INC. conducted any investigation regarding these matters and makes no warranty or representation whatsoever regarding the accuracy or completeness of the information provided. All potential buyers must take appropriate measures to verify all of the information set forth herein. Prospective buyers shall be responsible for their costs and expenses of investigating the subject property.

**PROPERTY SHOWINGS ARE BY APPOINTMENT ONLY.
PLEASE CONTACT THE WESTMORE GROUP, INC. ADVISOR FOR MORE DETAILS.**

CREVE COEUR, IL

CREVE COEUR, IL 61610



Westmore Group, Inc.

15455 Conway Road, Suite 205
Chesterfield, MO 63017
Office: 636-534-5900
westmoregroup.com

David Elkan

Broker
Mobile: 636-534-5900
info@westmoregroup.com
License #: 2006016265

Daniel Elkan

Broker
Direct: 636-534-5900
daniel@westmoregroup.com
License #: 471012536